

Customer :

customer

Customer part :

customer part

Comment :

Comment

S1=2.22

S2=2.96

Tmax=459

Tp S2=498.0

PI=0.43

HI=119

Sample =1668.10

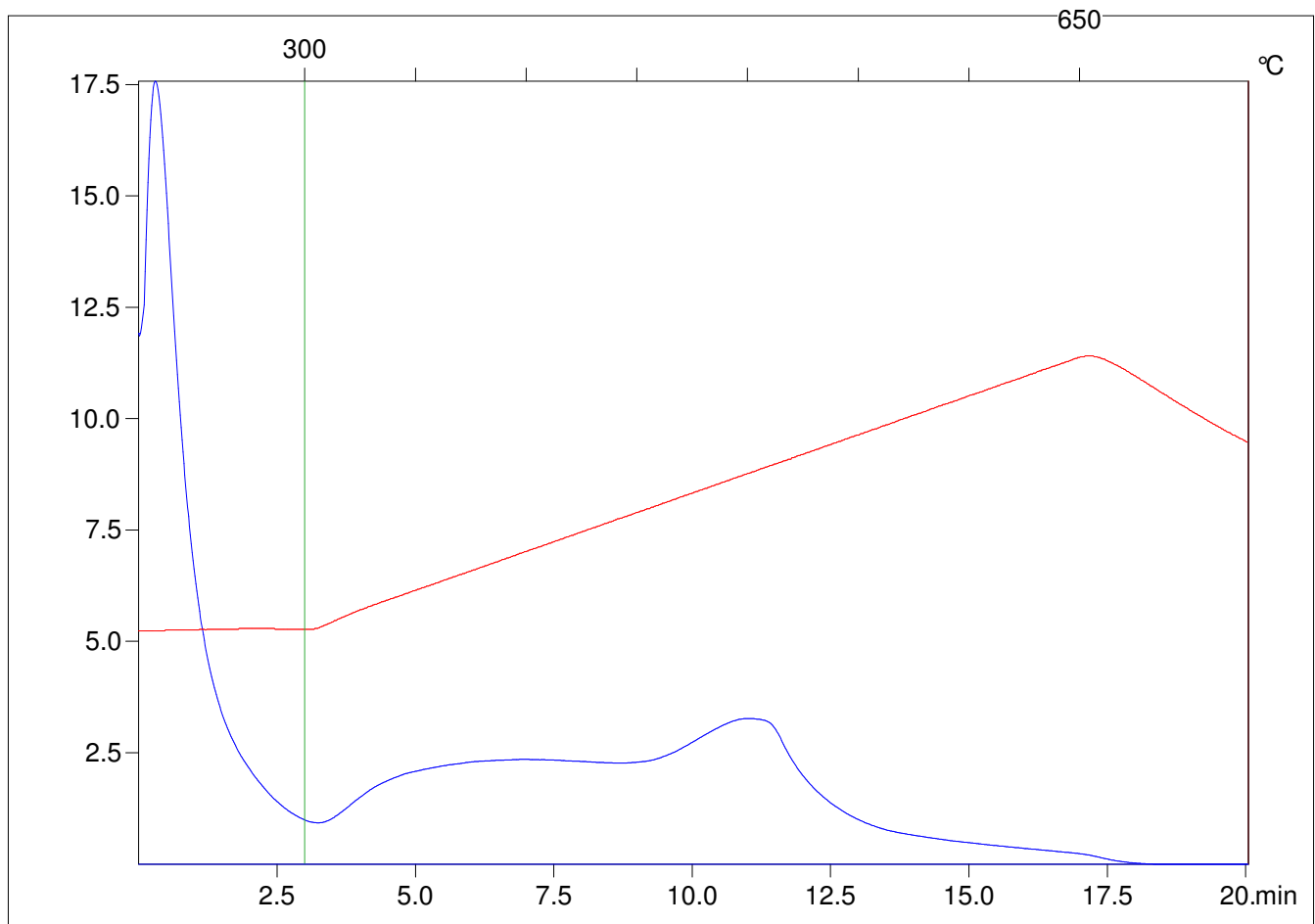
Method =Bulk Rock

Cycle=Basic

KFID(10*9)=1444

Qty =70.4

TOC=2.48



C:\VINC\PK1_1792\PK008.R00 : FID pyrolysis graphic

State

Pyro Status

Oxi Status